

# AIO 3.0 ANTI-TILT iBEAM® COUCH FIXATION FOR 54 cm BASE PLATES (MR safe) (set of 2)



Article No. : **38221**

## A. GENERAL PRODUCT INFORMATION

The product referred to in these instructions is a device used to fix the AIO Solution 3.0 54 cm wide base plates from Orfit Industries onto iBEAM® EVO couches (530 mm wide).

## B. PRODUCT RANGE

This product can be used with all AIO Solution 3.0 base plates of 540 mm.

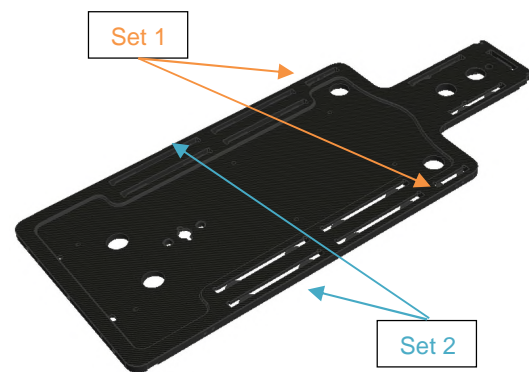
## C. PARTS LIST

The AIO 3.0 iBEAM® Couch Fixation for 54 cm base plates 38221 (**set of 2**) contains:

Article No.	Description	Pieces
38221/1	Main block	2
32813/2	Swivel part	2
32813/3	Safety feature	2
32813/4	Peek bolt M8 x 25	2
32813/5	Countersunk screw M5 x 20	4
32813/6	Slotted countersunk screw M3 x 10	2

## D. FIXATION TO THE BASE PLATE

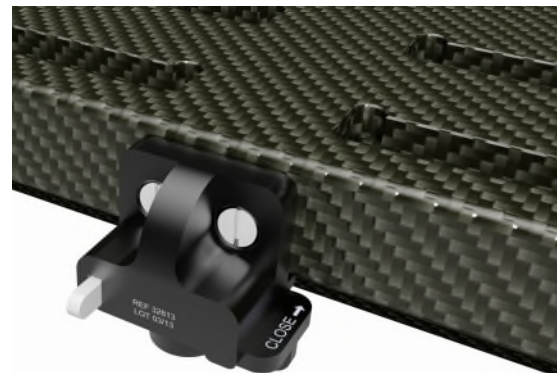
Mount the 38221/1 main blocks to the side of the AIO Solution 3.0 base plate using the plastic countersunk M5 x 20 screws and screwdriver. Do not tighten excessively as all parts are plastic.



**Set 2**  
Is essential in overhang situation!

The AIO Solution 3.0 base plates have 2 locations to attach a set of iBEAM® Couch Fixation.

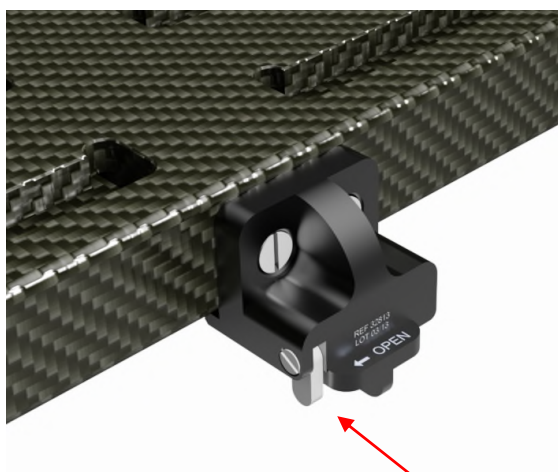
1. Fix the main blocks with the plastic screws to the base plate on both sides, using a flathead screwdriver.
2. Open the white safety pin and turn the swivelling part in the correct position as shown in the picture below.



3. To secure, turn the part 90° anti-clockwise, to swivel the anti-tilt part under the edge of the couch top.



4. Secure the anti-tilt part by turning the white safety pin downwards.



When only one set of iBEAM® Couch Fixation is used, combine it with a non-indexed couch fixation or a 2-pin indexing bar. Information on these other parts can be found in the respective 'instructions for use'.

The 38221 anti-tilt iBEAM® Couch Fixation can be used **in overhang ONLY** with general iBEAM® couches (530 mm in width). In this case it is vital to:

- Use the anti-tilt feature of the fixation device.
- Connect the fixation part in the most **caudal** holes of the base plate. (using the anti-tilt in the cranial holes, will not be strong enough and will result in breakage!)
- **Use a set (of two)** on both lateral sides of the baseplate. The calculations are delivered over 2

devices. Using only one part of the set will not withstand the forces below and will result in breakage!

- **DO NOT exceed** the maximum overhang line.

#### E. PRECAUTIONS FOR USE

Always fix the base plate securely to the treatment couch before positioning a patient.



**DO NOT USE ONE SET OF THE iBEAM® COUCH FIXATION ON ITS OWN WHEN THE BASE PLATE IS IN OVERHANG OFF THE COUCH TOP!**

The iBEAM® Couch Fixation does not provide a safe fixation for base plate overhang situations for other couches than iBEAM®.

Replace the plastic screws 32813/5 and 32813/4 once a year to avoid breakage. Replacement parts can be purchased under the following Art #:

- 32813/7 (2 x M8 bolts)
- 32813/8 (4 x M5 bolts)

Make sure the screws are tightened so there is no play of the base plate during setup and treatment.

The plastic screws can be damaged if excessive force is used during assembly with a screwdriver.

#### F. PROPERTIES

##### F.1 Physical Properties

Dimensions: L 48 mm x W 40 mm x H 37.5 mm  
Weight: < 0.1 kg

##### F.2 Mechanical Properties

The iBEAM® Couch Fixation is made of POM, Peak and PVDF. This provides the necessary stability to get accurate patient positioning even under frequent use.

This product is made entirely of electrically non-conductive, non-metallic and non-magnetic materials and is MRI safe.



Warning: keep metal wrenches which might be supplied in the package out of the MRI room.

### F.3 Dosimetric Properties

Because of the high density of the POM, do not use in the path of the beam.

#### G. STORAGE

Always store the product in a safe place to prevent it from getting damaged.

Store the product between +10°C (50°F) and 40°C (122°F).

#### H. MAINTENANCE AND WASTE MANAGEMENT

This product can be cleaned and disinfected by means of an isopropanol based disinfectant, applied with a soft cloth. If unsure about the cleaning fluid, do not use. **Never use aerosol sprays, corrosive cleaning agents, solvents or**

**abrasive detergents.** Further cleaning instructions can be found in the [Orfit Cleaning Guidelines](#).

Periodic checks of the product should be done to insure the parts are not worn and require repair or replacement. **Do not attempt to make repairs yourself.** Contact your distributor if there are any questions or concerns.

The product can be disposed of with household waste.

#### I. ADDITIONAL INFORMATION

For additional information such as distributor contact information, product brochures, Safety Data Sheets and regulatory information, please visit our website [www.orfit.com](http://www.orfit.com).

#### Note:

THE AIO SOLUTION® is a registered trademark of Orfit Industries.



#### ORFIT INDUSTRIES

Vosveld 9A | B-2110 Wijnegem | Belgium  
T (+32) (0)3 326 20 26  
[welcome@orfit.com](mailto:welcome@orfit.com)

[www.orfit.com](http://www.orfit.com)



Ref. No. 50237

VERSION 2

LAST UPDATE: 26/04/2023

REVISION DATE: 26/04/2025