

MAMMORX® - new design CARBON FIBRE BREAST BOARD ACCESSORIES



Article Nos.: **33170, 33176, 33178, CHB-1, CHD-1, CHO-1, CHS-1, CHT-1, CBA-1, CBS-2, 32145/5, 32145/6**

A. GENERAL PRODUCT INFORMATION

The products referred to in these instructions are medical devices, used for patient positioning and immobilization in radiation therapy.

To attain an optimal result, it is recommended to use these products in combination with Orfit immobilisation products.

B. PRODUCT DESCRIPTION

There are a wide variety of accessories for the MammoRx® Breast Board. Based on how the breast boards are going to be used, a selection of one or more of the accessories completes the breast board system.

Refer to paragraph C for a description of the different accessories.

C. MAMMORX® ACCESSORIES

The following accessories can be attached to the breast board.

Article no	Description
33170	Adjustable arm support
33176	Fixed grip pole
33178	Adjustable hand support

CHB-1	Blue gel ring head holder
CHD-1	Round head cup support
CHO-1	Orfit head support index base
CHS-1	Silverman head support index base
CHT-1	Timo head support index base
CBA-1	Bilateral arm support board
CBS-2	MammoRx bottom stop
32145/5	HP Breast Board Adapter 0-30 Left
32145/6	HP Breast Board Adapter 0-30 Right

C.1 Adjustable arm & hand support + fixed grip pole. 33170, 33176, 33178



33170



33176



33178

- 33170, See "[instructions for use](#)" and on www.orfit.com.
- 33176, See "[instructions for use](#)" and on www.orfit.com.
- 33178, See "[instructions for use](#)" and on www.orfit.com.

C.2 Head Support: CHB-1, CHD-1

A gel and foam Head Support are available. These Head Cups allow the head to be supported but also to be able to move side to side. The supports rest on a Head Cup Holder. These holders have two pins that locate the holder on the Tilt Board. The position of the Head Support can be recorded as there is an index notch that uncovers the index position silk screened to the Tilt Board.



CHB-1



CHD-1

C.3 Head Support Index Base: CHO-1, CHS-1, CHT-1

To use an Orfit, Timo or Silverman head support an Index Base should be used to attach them to the breast board. Each head support has its own Index Base. These Head Support Adapters have two pins that locate the Index Base on the Tilt Board. The position of the Head Support can be recorded as there is an index notch that uncovers the index position silk screened to the Tilt Board.

For the adapter CHO-1 and CHS-1 it is possible to change the position of the pins, by unscrewing it and then fastening it in another hole. The further the pins are positioned from each other the more stable the position of the head support is.



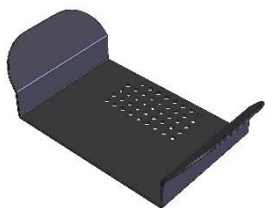
CHO-1

CHS-1

CHT-1

C.4 Bilateral Arm Support Board: CBA-1

The Bilateral Arm Support Board (BASS) allows both arms to be supported above the head to better stabilize the patient and minimize patient contact to the sides of a CT-scanner. The board is made of ABS plastic and has holes drilled in the flat portion of the board that matches the holes in the Tilt Board. Two pins on the back side of the board mount and index the BASS board to the Tilt Board. The various Head Support options may be used with this board as they are used with the Tilt Board. The two pins are fixed with titanium screws, Therefore the product is labelled as 'MR conditional'.



CBA-1



C.5 MammoRx Bottom Stop: CBS-2

The bottom stop can be indexed on a separate 2-pin bar in 8 positions. To change the position of the bottom stop cushion, lift the cushion by using the handgrips and move the cushion forwards or backwards. Choose a comfortable position for the patient and one that stops the patient from sliding down the board.



CBS-2

C.6 HP Breast Board Adapters: 32145/5, 32145/6

HP Breast Board Adapters allow the attachment of 2-points breast masks to the board. The adapters should be screwed in to the board at the level of the grid. Both adapters have a millimeter scale running from 0 to 30mm. The position 0 mm should be facing the cranial side of the board.



32145/5 (left) and 32145/6 (right)

D. PRECAUTIONS FOR USE

Please handle with care. When the products are handled roughly, they may get damaged. When this happens, stop using the product. Periodic checks of the products should be done to insure the parts are not worn and require repair or replacement. **Do not attempt to make repairs yourself**, but contact your distributor if there are any questions or concerns.

E. STORAGE

Always store the product in a safe place to prevent it from getting damaged. Prevent hard objects from falling onto the devices. Store the products between +10°C (50°F) and 40°C (122°F).

F. UNPACKING AND INSTALLATION

The MammoRx[®] accessories are designed to be ready for use following removal from their packing container.

When you receive your accessories, inspect all shipping containers for evidence of physical damage. If there are any dents, scratches, or other evidence of physical damage to the boxes, note the damage on the shipper's copy of the bill of lading and file a claim against the shipper.

In the case of shortages or malfunctions, notify your distributor immediately to arrange for replacement or repair. Save all packing containers and materials for the MammoRx[®] Breast Board

Accessories in case it needs to be returned to Orfit Industries for replacement or repair.

G. MAINTENANCE AND WASTE MANAGEMENT

These products can be cleaned and disinfected by means of an isopropanol based disinfectant, applied with a soft cloth. If unsure about the cleaning fluid, do not use. **Never use aerosol sprays, corrosive cleaning agents, solvents or abrasive detergents. Do not soak the products.** Do not apply extensive pressure on the markings while cleaning. Further cleaning instructions can be found in the [Orfit cleaning guidelines](#).

Periodic checks of the product should be done to insure the parts are not worn and require repair or replacement. **Do not attempt to make repairs yourself.** Contact your distributor if there are any questions or concerns.

H. ADDITIONAL INFORMATION

For additional information such as distributor contact information, product brochures, Safety Data Sheets and regulatory information, please visit www.orfit.com.

Note:

It is prohibited to make alterations to this text without prior approval from Orfit Industries. MAMMORX® is a registered trademarks of ORFIT Industries.



ORFIT INDUSTRIES
Vosveld 9A | B-2110 Wijnegem | Belgium
T (+32) (0)3 326 20 26
welcome@orfit.com

www.orfit.com



Ref. No. 50049
VERSION 7
LAST UPDATE: 13/04/2026
REVISION DATE: 13/04/2028